

# FlowAnalyser™ PF-300



“When it comes to precision,  
I rely on the Swiss’  
legendary devotion  
to detail.”



**You can never  
pay enough -  
attention to detail  
that is.**



Bi-directional flow measurements of dry or humid gas according to all gas standards.



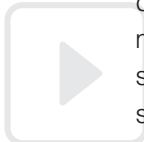
DAC (Direct Access Control) is the intelligent shortcut to the current display of information.



Intuitive user interface with numeric values, statistics and realtime curves.

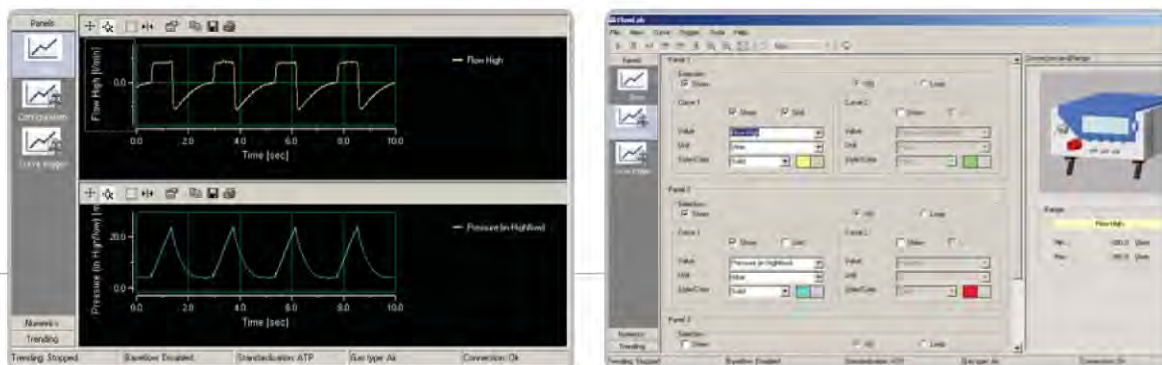


Nowadays, decisions are often based on information provided by medical and industrial equipment. But who guarantees that the data delivered is accurate? Measuring your pneumatic equipment for reliability and precision with a dependable calibration tool is critical in avoiding fatal errors. Precision and reliability are exactly what the FlowAnalyser™ PF-300 provides. The FlowAnalyser™ PF-300 measures flow, pressure, temperature, humidity and O<sub>2</sub> concentrations bi-directionally. The one-of-a-kind Adult, Pediatric and High Frequency ventilation measuring modes make the FlowAnalyser™ the ideal calibration tool for all ventilators, anesthesia machines and spirometers. The FlowAnalyser™ distinguishes itself from other calibration tools by combining a simple, intuitive multilingual user interface with the highest precision. FlowLab™ software complements the FlowAnalyser™ by offering a wide range of graphical analysis capabilities. Swiss devotion to detail at its best.



<b>Measurements</b>	Low Flow	Range	-20 ... 20 sl/min
		Accuracy	+/- 1.75 % of reading or 0.05 sl/min
	High Flow	Range	-300 ... 300 sl/min
		Accuracy	+/- 1.75 % of reading or 0.1 sl/min
	Volume	Range	0 ... 10 sl
		Accuracy	+/- 2 % of reading or 0.02 sl
	Differential pressure	Range	-150 ... +150 mbar (-2 ... +2 psi)
		Accuracy	+/- 0.75 % of reading or 0.1 mbar
	High pressure	Range	0 ... 10 bar (0 ... 142 psi)
		Accuracy	+/- 1 % of reading or 10 mbar
	Atmospheric pressure	Range	0 ... 1150 mbar
		Accuracy	+/- 1 % of reading or 5 mbar
	Oxygen	Range	0 ... 100 %
	Accuracy	+/- 1 % O <sub>2</sub>	
Temperature	Range	0 ... 100 °C	
	Accuracy	+/- 1.75 % of reading or 0.5 °C	
Humidity	Range	0 ... 100 %	
	Accuracy	+/- 2 % r.H.	
<b>Graphic Display</b>	Intuitive user interface with numeric values, statistics, volume trigger configuration, gas selection and calibration menus		
<b>Respiratory Parameters</b>	Respiratory Parameters can be measured for Pediatric, Adult and High Frequency ventilators: V <sub>ti</sub> , V <sub>te</sub> , V <sub>i</sub> , V <sub>e</sub> , Rate, I:E, T <sub>i</sub> , T <sub>e</sub> , Ratio T <sub>i</sub> /T <sub>e</sub> , P <sub>peak</sub> , P <sub>mean</sub> , PEEP, P <sub>plateau</sub> , C <sub>stat</sub> , PeakFlow Insp., PeakFlow Exp.		
<b>Communication Interfaces</b>	USB for PC tool FlowLab™, RS 232 for individual communication		
<b>Power &amp; Physical Data</b>	TTL for external Trigger and as an option: Ethernet connection		
	AC input	90 ... 260 VAC, 50/60 Hz	
	Power consumption	10 VA	
	Internal battery	yes	
	Gas compatibility	Air, oxygen, nitrous oxide, nitrogen, helium, heliox, carbon dioxide and mixtures	
	Gas standards	ATP, AP21, STP, STP Humid, BTPS, BTPD, 0/1013, 20/981, 15/1013, 20/1013, 25/991	
	Dimensions (w x d x h)	22 x 25 x 12 cm	
	Weight	3.7 kg	
<b>Environmental Data</b>	Temperature	10 to 40 °C	
	Humidity	up to 95 % r.H.	
<b>Compliance &amp; Approvals</b>	CE and CSA		

64.23 inH<sub>2</sub>O



## FlowLab™ Software

FlowLab™ is the ideal software package. Its uniqueness is reflected in the simplicity of its menu. Selecting your preferred display mode (Panels, Trending or Numerics) is easily determined with a few simple mouse clicks.

### Panels

- Display in relation to time or as a loop with various cursors to measure the curves
- Graphic trigger used to display real-time curves in Single Shot, Norm or Auto mode
- User-defined layout and colors
- Option of setting a title, printing and saving
- Simultaneous display of up to six different curves
- Adjustable filters can be applied to the values

### Trending

- Over 100 hours of data logging possible
- User-defined trending interval
- Up to ten values simultaneously
- Data export to Excel, etc.
- User-defined layout and colors
- Option of setting a title, printing and saving
- Pre-informed about anticipated file size

### Numerics

- All measurements displayed on one page or combined with panels
- User-defined layout and colors
- Statistical data including mean, min and max for each value

### Minimum System Requirements

- Intel® Pentium® III 800 MHz (P4 1200 MHz recommended)
- Microsoft® Windows® 98, Me, 2000, XP / Microsoft® Internet Explorer 5.01 or higher
- 128 MB RAM (256 MB recommended)
- 160 MB hard disc space (full install)
- CD-ROM drive
- Display 800 x 600 (1024 x 768 recommended)

### Options

- MultiGasAnalyser™ OR-703 to measure CO<sub>2</sub>, N<sub>2</sub>O and anesthetic agents
- SmartLung™ ventilator test lung
- High pressure adapter DISS O<sub>2</sub>

**imtmedical**

**imtmedical ag**  
 Gewerbstrasse 8  
 9470 Buchs SG  
 Switzerland  
 T: +41 81 750 66 99  
 F: +41 81 750 66 95  
 www.imtmedical.com